



KENISE BARNES FINE ART

Director's Choice - Celebrating 30 Years

March 1 - April 13, 2025

Learn more about our artists, find artists' statements, CV and press on our website www.kbfa.com



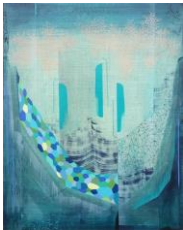
Daniel Anselmi
Untitled (7-14), 2024
painted paper collage on panel
12 x 18 inches

\$2,600.



Margaret Neill
SWEET TALK,
oil on canvas
56 x 50 inches

\$7,000.



Gabe Brown
Water Diaries, 2021
oil on linen mounted on panel
30 x 24 inches

\$3,400.



Jill Parisi
Earth and Sky Star, 2021
hand-colored digital prints on hand-cut, pigmented, handmade loktah
paper pinned with black enameled brass tipped steel entomology pins to
fabric covered ethafoam, dibond and wood strainer
10.5 x 10.5 x 3.5 inches (framed in acrylic shadowbox)

\$1,600.



Jill Parisi
Paisleys and Thistles Star Flower, 2021
hand-colored etchings on hand-cut handmade Loktah paper chine colléd
to Rives lightweight paper, hand-cut marbled paper, and hand-cut
pigmented handmade Loktah paper pinned with black enameled brass
tipped steel entomology pins to a fabric covered ethafoam, dibond and
wood strainer
12.5 x 12.5 x 3.5 inches (framed in acrylic shadowbox)

\$1,800.

7 Fulling Lane, Kent, CT 06757 860 592 0220

KBFA.com



Jill Parisi
Fanfare Star, 2021
hand-colored etchings on hand-cut handmade Loktah paper, hand-colored digital prints on hand-cut pigmented handmade Loktah paper pinned with black enameled brass tipped steel entomology pins to fabric covered ethafoam, dibond and wood strainer
10.5 x 10.5 x 3.5 inches (framed in acrylic shadowbox) \$1,600.



Josette Urso
Overview, 2019
oil on canvas
36 x 48 inches \$6,500.



David Konigsberg
Sprite and Anemone, 2022
oil on canvas
55 x 44 inches \$12,000.



David Collins
Here and There, 2025
acrylic on canvas
60 x 60 inches \$8,500.



Susan English
Seagirt, 2024
tinted polymer on Dibond panel
59 x 48 inches \$10,500.



Mary Judge
Pollinator, 2020
oil on linen
8 x 6 inches (unframed), 9.5 x 7.5 inches (framed) \$1,500.



Eve Stockton
Falls Var. 10, 2022
woodblock print with colored and silver inks on paper
36 x 36 inches (unframed), 41.25 x 41.25 inches (framed) \$3,780. (framed)



Margaret Lanzetta
Marquess Marchioness I, 2021
oil-based inks, paper and Mylar relief monoprint on Rives BFK paper
30 x 22 inches (unframed), 34 x 26.5 inches (framed)

\$2,700.
(framed)



Margaret Lanzetta
Princess Diana, Spencer Tiara, UK, ca.1930, 2016
porcelain
12 inches (diameter), 10 inches (height)

\$3,000.



Margaret Lanzetta
Glinda, Good Witch of the North, Wizard of Oz, 1939, 2016
stoneware with graphite finish
12 inches (diameter), 18 inches (height)

\$3,500.



Margaret Lanzetta
Joffrey, Game of Thrones, 2011, 2016
stoneware with graphite finish
12 inches (diameter), 16 inches (height)

\$3,500.



Donna Sharrett
Hitklike Green River Watershed 2019 #1, 2021
fabric, trimming, thread, guitar strings and ball-ends
18 x 30 inches (unframed), 23 x 35 inches (framed)

\$5,500.
(framed)



Tricia Wright
Small Matters (hand and bird), 2023
12 karat gold leaf on handmade paper
21 x 18 inches (unframed), 24 x 20 inches (framed)

\$3,400.
(framed)



Tricia Wright
Small Matters (hand and flower), 2023
23 karat red gold leaf on handmade paper
21 x 18 inches (unframed), 24 x 20 inches (framed)

\$3,400.
(framed)



Tricia Wright
Small Matters (hand and snail), 2023
12 karat gold leaf on handmade paper
21 x 18 inches (unframed), 24 x 20 inches (framed)

\$3,400.
(framed)



Cecile Chong
Self Service, 2021
encaustic (pigmented beeswax) and mixed media on panel
9 x 14 inches (oval)

\$2,200.



Daniel Anselmi
Untitled (4-20), 2024
painted paper collage on panel
30 x 30 inches

\$5,000.



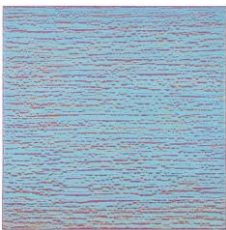
Joanne Mattera
Silk Road 410, 2018
encaustic (pigmented beeswax) on panel
18 x 18 x 1.5 inches

\$4,400.



Joanne Mattera
Silk Road 413, 2018
encaustic (pigmented beeswax) on panel
18 x 18 x 1.5 inches

\$4,400.



Joanne Mattera
Silk Road 416, 2018
encaustic (pigmented beeswax) on panel
18 x 18 x 1.5 inches

\$4,400.



Joanne Mattera
Silk Road 358, 2016
encaustic (pigmented beeswax) on panel
18 x 18 x 1.5 inches

\$4,400.



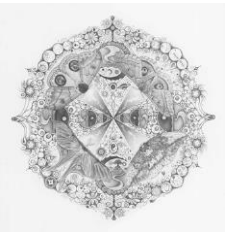
Joanne Mattera
Silk Road 415, 2018
encaustic (pigmented beeswax) on panel
18 x 18 x 1.5 inches

\$4,400.



Joanne Mattera
Silk Road 412, 2018
encaustic (pigmented beeswax) on panel
18 x 18 inches

\$4,400.



Michiyo Ihara
Snowflakes #139 "Companions", 2015
graphite on paper (hand-drawn)
22.25 x 22.25 inches (unframed)
25.25 x 25.25 inches (framed)

\$5,000.



Jackie Battenfield
Coral Fling, 2018
acrylic on mylar mounted on acrylic panel
60 x 40 inches (unframed), 61.25 x 41.25 inches (framed)

\$11,300.



Andrea Kantrowitz
Vernal Pool, 2024
sumi ink and pumice on Mylar mounted on acrylic panel
71.5 x 34.75 inches (mounted)

\$8,500.



Cecile Chong
Nada Extraño / Nothing Strange, 2024
encaustic (pigmented beeswax) and mixed media on panel
30 x 80 inches (diptych)

\$22,000.



Gregory Hennen
Long Shadows Feb Wyatt Mt, 2022
oil on panel
24 x 24 inches

\$5,000.



Melanie Parke
Flora Seeds, 2023
oil on canvas
40 x 40 inches

\$6,900.
(on hold)



Eleanor White
Untitled, 2025
sodalite, labradorite, mother of pearl, kyanite, ruby, volcanic rock, howlite,
polymer medium on painted paper
18 x 21.75 inches (unframed), 21.5 x 25 inches (framed)

\$1,600.



Michiyo Ihara
Snowflakes #114 "Response", 2014
graphite on paper (hand-drawn)
10.25 x 10.25 inches (unframed)
11.75 x 11.75 inches (framed)

\$1,000.00



Mary Judge
Watermill Pinwheel W11, 2023
powdered pigment on paper
30 x 30 inches (unframed), 33.75 x 33.75 inches (framed)

\$4,635.
(framed)



Mary Judge
Primavera Pop 36, 2023
powdered pigment on paper
30 x 30 inches (unframed), 34.5 x 34.5 inches (framed)

\$4,235.
(framed)



Eleanor White
Earthbound, 2022
crushed jade, snakeskin shed, porcupine quills, bonded copper, fossilized
wood, eggshell, wood ash, glass beads, polymer medium on painted paper
44 x 25 inches (unframed), 47.25 x 27.75 inches (framed)

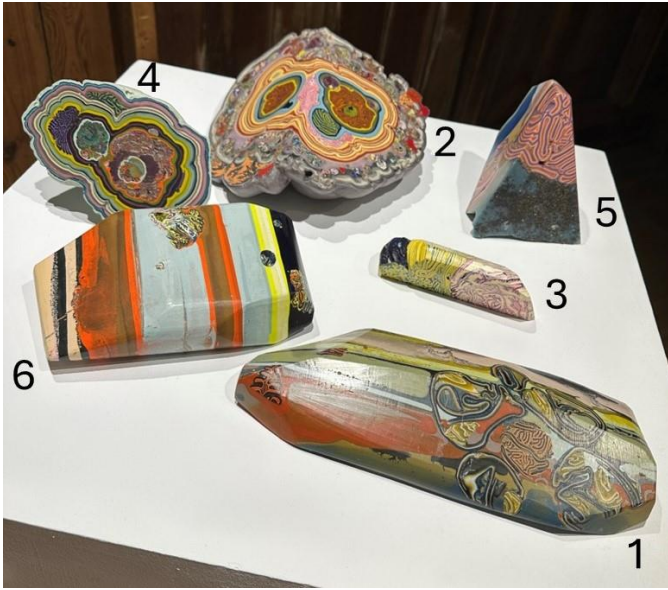
\$4,200.



Donna Sharrett
Hitklike Pocantico River Watershed 2019 #1, 2021
fabric, trimming, thread, guitar strings and ball-ends
14 x 17.5 inches (unframed), 18.75 x 23 inches (framed)

\$3,800.

Laura Moriarty



1. *Flint #14*, encaustic (pigmented beeswax), 11.5 x 4.75 x 1.25 inches, \$600.
2. *Heart Geode*, encaustic (pigmented beeswax), 12.5 x 11 x 6 inches, \$850.
3. *Flint #10*, encaustic (pigmented beeswax), 1 x 2.5 x 6 inches, \$300.
4. *Many Moons*, encaustic (pigmented beeswax), 6 x 4.5 x 3.5 inches, \$600.
5. *Flint #12*, encaustic (pigmented beeswax) and black sand, 6 x 5 x 4 inches, \$600.
6. *Flint #15*, encaustic (pigmented beeswax), 8 x 5 x 2 inches, \$600.

Kenise Barnes Fine Art represents more than fifty artists.

Please visit our website KBFA.com or inquire for images and information.

SERVICES

Complimentary in-home or in-office consulting.

Artwork is available on an on-approval.

Delivery and installation services.